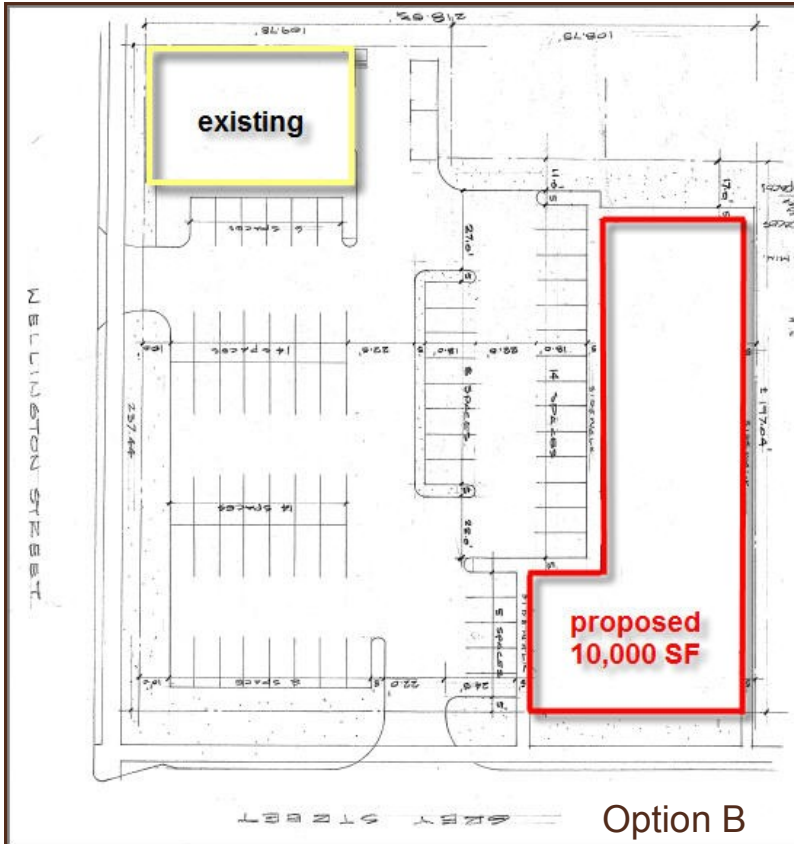


149 Wellington Street  
London, Ontario

# Stronghold<sup>®</sup> commercial



## At a glance:

To be built

From \$20.00 SF/net

3,000 to 10,000 SF

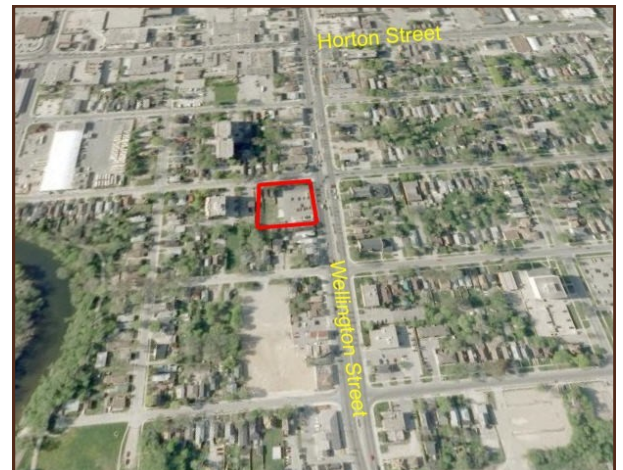
Parking for 70

36,000 daily traffic count

Retail pad or plaza

Close to downtown

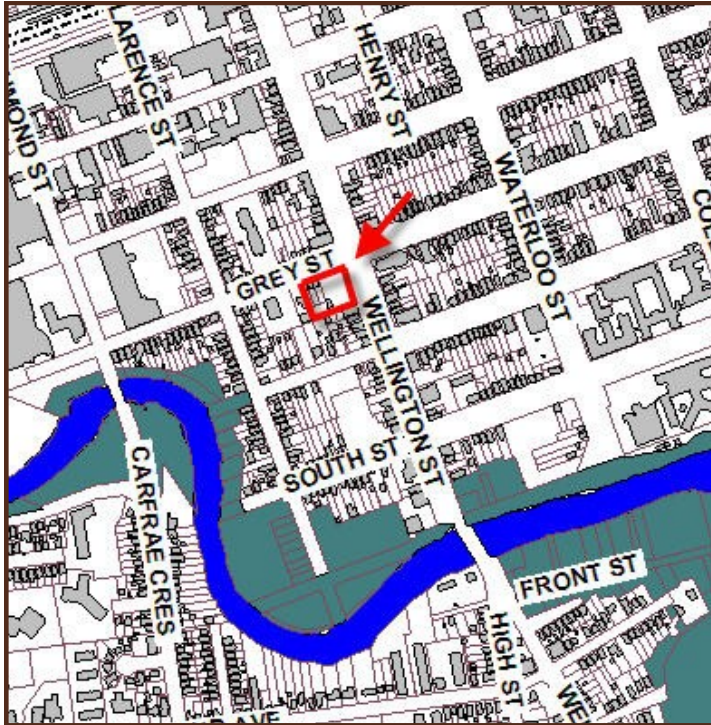
Free standing building



**Shawn Parkinson\***  
**519-646-1200**

# LEASE

# Stronghold<sup>•</sup> commercial



## Zoning allows for:

- Retail Stores
- Grocery stores
- Offices
- Medical/Dental
- Hotel
- Apartment building
- Clinics
- Day care
- Financial institutions
- Restaurants
- Food Store
- ...and more

